



The diorama's structures follow real world construction practice. They have two by four framing on two foot centers, cutouts in the framing for the doors and windows, floor joists with two by six inch floorboards and, where appropriate, piers. Wall coverings attach directly to the framing. All roofing features full rafter detail (again, scale two by four lumber on two foot centers). The roof exteriors include tin, tile, slate, tar, and thatch.

Depot Junction was fun to build and has provided many hours of pleasure. I will apply the lessons I learned from its construction to a new project, mostly likely a diorama representing the coast of northern New Guinea. The area is still very wild. They regularly pirate full size container ships and live in thatched buildings with satellite dishes. The railroad

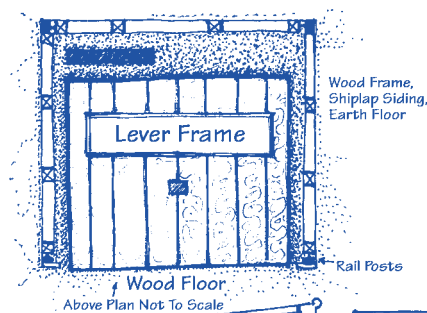
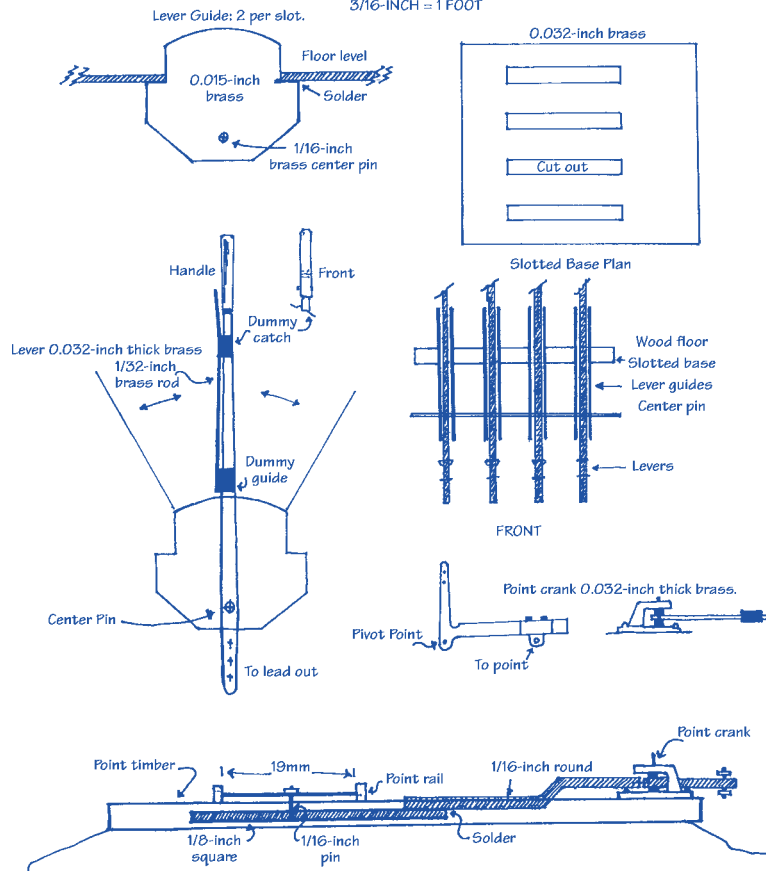
would haul fish, herbs, and plantation produce rather than contraband containers. Of course, the concept is subject to change. Regardless, it will be a very light 1:32 scale railway and, when I finish it, I hope to send photos to **FR**.

Mechanical Operation Plans

One-half size for 1:32 scale.

1:64 SCALE

3/16-INCH = 1 FOOT



Basic Construction:
Frame with code 150 rail. Solder rail to .032-inch brass base plate. Wood framing between rail posts. Sheath with wood siding. Corrugated iron roof. Cast concrete walls support lever frame. Solder pins supporting cranks and wheels to base plate. Wood flooring should be thick, heavy, and removable. It fits over base plate.

1:64 SCALE
3/16-INCH = 1 FOOT
(EXACTLY 1/2-SIZE 1:32 SCALE)

